

**kuzeyboru**



# PRODUCT CATALOG

15 August 2025



# Contents

About Us \_\_\_\_\_ 4



Environment And Sustainability \_\_\_\_\_ 5



Quality \_\_\_\_\_ 6



PPR Pipes \_\_\_\_\_ 8



PP-R Pipe (Glass Fiber Reinforced) \_\_\_\_\_ 11



PP-R Aluminum Pipe \_\_\_\_\_ 13



PP-R Fittings \_\_\_\_\_ 15



PVC-U Pipe and Fittings \_\_\_\_\_ 27



PE-RT and PE-XB Pipes \_\_\_\_\_ 33



MaxiPipe Metal Group \_\_\_\_\_ 37



Documents and Certificates \_\_\_\_\_ 47



# ABOUT US



Kuzeyboru was established in 2001 with the vision of a global brand offering innovative solutions for infrastructure and superstructure piping systems. Kuzeyboru, which specializes in the production of pipes, especially GRP, Polyethylene (HDPE), Corrugated and PPR pipes and fittings, with its world-class production facilities and wide product range, offers comprehensive solutions for infrastructure and superstructure projects.

Acting with a sustainable production approach, Kuzeyboru has been a professional solution partner in many infrastructure and superstructure projects in 105 countries in 5 continents since its establishment. It has become one of Turkey's largest manufacturers in GRP, Corrugated Pipe, HDPE and PPR product groups with its modern facilities built on a total area of 162,336.23 m<sup>2</sup>. Having the title of "The First Ministry Certified R&D Center" in the plastic pipe sector, Kuzeyboru aims to develop innovative production techniques,

process optimization and create an ecosystem that can respond quickly to the changing needs of the market with this center. The R&D Center is one of the important building blocks that contribute to Kuzeyboru's sustainable production targets.

Beyond being a professional solution partner, Kuzeyboru also makes a difference with its projects that add value to society. In line with its social responsibility principles, it prioritizes women's employment and equal opportunities and takes important steps in this field. With the "Etkiniz" project, the Company aims to create social benefit by reducing the environmental impact of production, increasing energy efficiency and developing projects for future engineer candidates. In addition, the Company strengthens the place of women in society and contributes to national sports by supporting the women's volleyball team in the Sultans League.



162.336,23 m<sup>2</sup>  
production area



5 continents Export to  
105 countries



Among the 100 fastest  
growing companies  
according to TOBB data



%100 domestic  
capital

# ENVIRONMENT AND SUSTAINABILITY

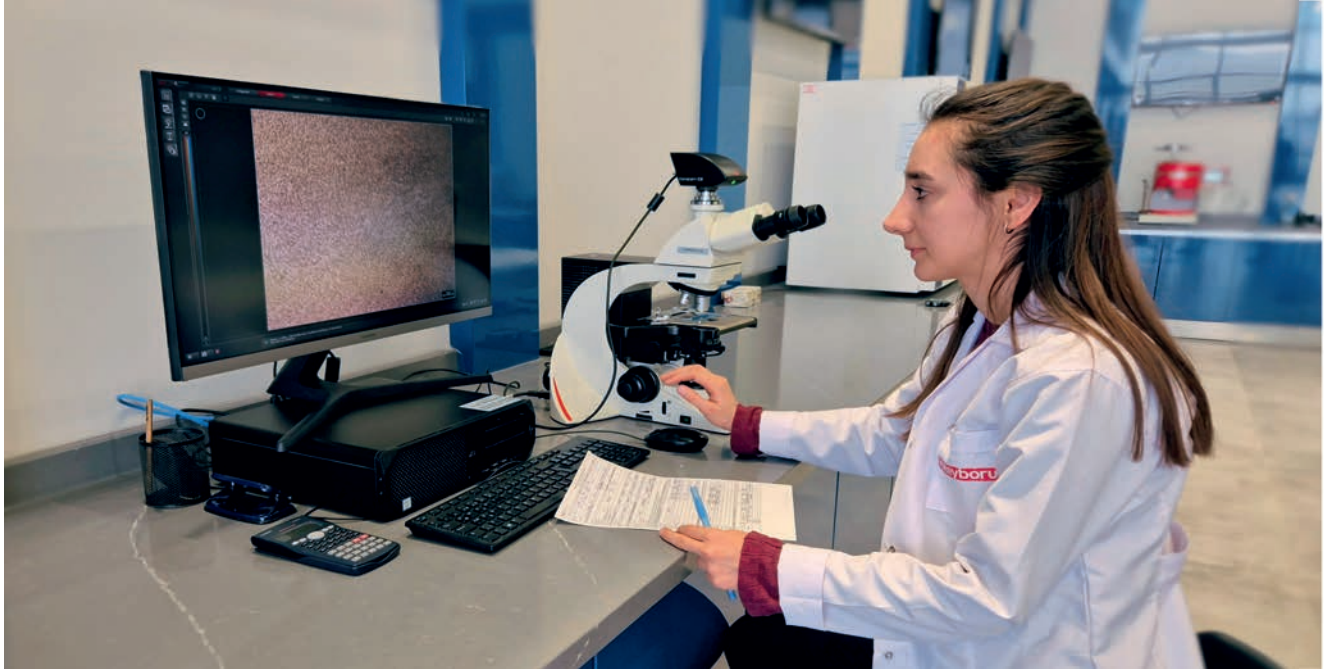
Kuzyboru holds the TS EN ISO 14001 Environmental Management System certification, emphasizing its commitment to environmental safety. The company prioritizes health and environmental considerations in the development of its innovative products. Recognizing the environment as a precious treasure, Kuzyboru places significant importance on sustainability, carbon footprint monitoring, and the use of renewable energy. Kuzyboru effectively and

efficiently manages natural resources by employing environmentally friendly technologies. It also raises awareness among its employees and stakeholders to protect biodiversity.

Sustainability is a strategic priority for Kuzyboru and an integral part of all its activities. The company meets its energy needs for production from sustainable sources, thanks to its land-based and rooftop solar energy systems.



# QUALITY



## **Our Quality Philosophy**

We adopt an inclusive management approach that empowers leadership at all levels and strengthens the implementation of decision-making processes and the analysis of data to make continuous improvements. Our goal is to achieve sustainable success through operational excellence and lean production, making the most effective use of workforce, processes, and technology. Kuzeyboru's quality control process is composed of three main sections to ensure quality at every stage of production:

Incoming Quality Control

Process Quality Control

Final Quality Control

### **1. Incoming Quality Control**

The process begins with the procurement of raw materials and auxiliary supplies from external sources. Upon delivery, the ordered materials are subjected to incoming quality control tests according to the quality control plan and relevant product standards. Products that pass the conformity tests are labeled with an acceptance tag and moved to stock areas. Non-conforming products are identified with a non-conformity report,

transferred to the rejection area, and returned to the supplier.

### **2. Process Quality Control**

At the start of production, all stages of our machinery are checked for occupational safety and production efficiency. During production, samples from the first output are tested in our laboratory according to the relevant product standards and specifications. Every product produced is inspected in accordance with the quality plan to ensure compliance with customer requirements and international standards. To ensure traceability, each product is permanently marked using laser marking. All records related to raw materials, machine process logs, sample test results, and periodic inspection outcomes are stored digitally and preserved for the duration specified in the quality standards.

### 3. Final Quality Control

Products that pass both the incoming and process quality control stages and are moved to stock are subjected to a final quality check before shipment. At this stage, quality control engineers re-verify compliance with all quality standards, and shipment approval is granted.

### Our Accredited Testing Laboratory

Kuzeyboru Testing Laboratory prioritizes conducting its operations in accordance with national and international standards, delivering results in the shortest time possible, using cost-effective and technically sound practices. Core principles include impartiality, independence, integrity, confidentiality, reliability, and legal compliance. T-

he laboratory aims to exhibit excellent professional practices with its continuously trained expert staff, meet customer expectations at the highest level using up-to-date testing methods and technologically advanced devices, and ensure accurate test results using necessary reference/standard materials. Additionally, it strives to improve test quality through interlaboratory comparison measurements and minimize complaints with a customer satisfaction-oriented approach. All personnel work in accordance with policies and procedures based on the TS EN ISO/IEC 17025 standard. The laboratory management is committed to complying with this standard and pursuing continuous improvement.



**kuzeyboru**



## **PP-R PIPES**

MaxiPipe PP-R  
Advantages of Pipes:

- **Easy Installation**
- **High Durability**
- **Resistance**
- **Long Lifetime**
- **Low Heat Loss**



# PP-R PIPES

PP-R pipe is a type of pipe specially designed for building interior water transportation systems and is made of PP-R Copolymer material. MaxiPipe PP-R pipes offer an excellent solution for the safe, durable, and long-lasting transportation of water.

MaxiPipe PP-R pipes are manufactured in accordance with the TS EN 15874-2 standard.

## Advantages of MaxiPipe PP-R Pipes

**High Durability:** MaxiPipe PP-R pipes are resistant to chemical corrosive substances, rust and corrosion, high pressure, and impacts. This ensures long-term reliability.

**Resistance:** They are resistant to rust, corrosion, and chemicals, making them a safe choice for drinking water systems.

**Low Heat Loss:** With excellent thermal insulation properties, they minimize heat loss, contributing to energy savings.

**Easy Installation:** Due to their lightweight and flexible design, MaxiPipe PP-R pipes can be easily installed.

**Long Lifespan:** MaxiPipe PP-R pipes are long-lasting and require minimal maintenance.

## PP-R PIPE / PN16 - SDR 7,4

PRODUCT CODE	DN(Φ)	UNITS PER PACK	PACKAGE TYPE
MX.01.DB.200016	20	160	TIED
MX.01.DB.250016	25	120	TIED
MX.01.DB.320016	32	80	TIED
MX.01.DB.400016	40	60	TIED
MX.01.DB.500016	50	40	TIED
MX.01.DB.630016	63	24	TIED
MX.01.DB.750016	75	16	TIED
MX.01.DB.900016	90	12	TIED
MX.01.DB.110016	110	8	TIED
MX.01.DB.125016	125	8	TIED



## PP-R PIPE / PN20 - SDR 6

PRODUCT CODE	DN(Φ)	UNITS PER PACK	PACKAGE TYPE
MX.01.DB.200020	20	160	TIED
MX.01.DB.250020	25	120	TIED
MX.01.DB.320020	32	80	TIED
MX.01.DB.400020	40	60	TIED
MX.01.DB.500020	50	40	TIED
MX.01.DB.630020	63	24	TIED
MX.01.DB.750020	75	16	TIED
MX.01.DB.900020	90	12	TIED
MX.01.DB.110020	110	8	TIED
MX.01.DB.125020	125	8	TIED



Other Color Options: 

## PP-R PIPE / Pn25 - SDR 5

PRODUCT CODE	DN(Φ)	UNITS PER PACK	PACKAGE TYPE
MX.01.DB.200025	20	160	TIED
MX.01.DB.250025	25	120	TIED
MX.01.DB.320025	32	80	TIED
MX.01.DB.400025	40	60	TIED
MX.01.DB.500025	50	40	TIED
MX.01.DB.630025	63	24	TIED
MX.01.DB.750025	75	16	TIED
MX.01.DB.900025	90	12	TIED
MX.01.DB.110025	110	8	TIED
MX.01.DB.125025	125	8	TIED



Other Color Options:     



**kuzeyboru**

## **PP-R Composite (Glass Fiber Reinforced)**

MaxiPipe PP-R Composite  
Advantages of Pipes

- **Thermal Elongation Capacity**
- **Durability**
- **High Pressure Capacity**
- **Low Thermal Expansion**
- **Low Thermal Expansion**
- **Easy Assembly**



# PPR COMPOSITE PIPES (Glass Fiber Reinforced)

MaxiPipe offers the ideal solution for your plumbing needs with its innovative PP-R Composite (Glass Fiber Reinforced) pipes. These pipes have superior advantages compared to traditional plastic pipes.

MaxiPipe Glass Fiber Reinforced PP-R pipes are manufactured in accordance with the TS EN 13715 standard.

## Advantages of MaxiPipe PP-R Composite Pipes

**Thermal Linear Expansion Coefficient:** The thermal linear expansion coefficient of composite pipes is low, which enhances system safety. For example, standard pipes have a value of 0.15 mm/m<sup>°K</sup>, while composite pipes have a value of 0.035 mm/m<sup>°K</sup>. A lower expansion coefficient provides greater stability against thermal changes.

**Durability:** Thanks to their glass fiber reinforced structure, they are long-lasting and durable. They are

resistant to chemical effects and corrosion.

**High Pressure Capacity:** With their ability to withstand high pressures, they are an excellent choice for industrial and commercial applications.

**Low Thermal Expansion:** The low thermal expansion coefficient ensures stability against temperature changes in the system, increasing the reliability of the installation.

**Easy Installation:** With their lightweight design and special connection systems, they are easy to install and require minimal maintenance.

MaxiPipe PP-R Composite (Glass Fiber Reinforced) pipes combine reliability, durability, and efficiency to ensure your plumbing operates smoothly and lasts for years.



## PP-R COMPOSITE PIPE / PN20 - SDR 7,4

PRODUCT CODE	DN(Φ)	UNITS PER PACK	PACKAGE TYPE
MX.01.KB.200020	20	160	TIED
MX.01.KB.250020	25	120	TIED
MX.01.KB.320020	32	80	TIED
MX.01.KB.400020	40	60	TIED
MX.01.KB.500020	50	40	TIED
MX.01.KB.630020	63	24	TIED
MX.01.KB.750020	75	16	TIED
MX.01.KB.900020	90	12	TIED
MX.01.KB.110020	110	8	TIED

## PP-R COMPOSITE PIPE / PN25 - SDR 6

PRODUCT CODE	DN(Φ)	UNITS PER PACK	PACKAGE TYPE
MX.01.KB.200025	20	160	TIED
MX.01.KB.250025	25	120	TIED
MX.01.KB.320025	32	80	TIED
MX.01.KB.400025	40	60	TIED
MX.01.KB.500025	50	40	TIED
MX.01.KB.630025	63	24	TIED
MX.01.KB.750025	75	16	TIED
MX.01.KB.900025	90	12	TIED
MX.01.KB.110025	110	8	TIED

Other Color Options: 



## PP-R PIPE WITH ALUMINUM FOIL

MaxiPipe PP-R Aluminum Foil  
Advantages of Pipes

- **Endurance**
- **High Pressure Capacity**
- **Low Thermal Expansion**
- **Easy Assembly**



# PPR PIPE WITH ALUMINUM FOIL

A PPR aluminum foil pipe, also known as a PPR-Al-PPR pipe, is a type of multi-layer composite pipe commonly used in hot and cold water systems, heating installations, and sometimes in air conditioning systems. These pipes typically consist of three layers:

**Inner Layer:** Made of Polypropylene Random Copolymer (PPR) – this is the part that comes into contact with water. It's hygienic, corrosion-resistant, and safe for drinking water.

**Middle Layer:** A thin aluminum foil – this layer increases the pipe's temperature and pressure resistance, and more importantly, reduces thermal expansion.

**Outer Layer:** Another layer of PPR – provides protection against external physical and chemical effects.

## Advantages

**Low thermal expansion** (less bending or sagging compared to pure plastic pipes)

**High resistance** to heat and pressure

**Oxygen barrier** structure (important in heating systems to prevent corrosion in metal components)

**Easy to install** (can be joined by welding)

MaxiPipe PP-R Composite (Glass Fiber Reinforced) pipes combine reliability, durability, and efficiency to ensure your plumbing operates smoothly and lasts for years

Common Applications:

Indoor potable water piping.

Radiator heating systems.

Underfloor heating.

Solar water heating systems.



## PP-R PIPE WITH ALUMINIUM PN25 - SDR 6

PRODUCT CODE	DN(Φ)	UNITS PER PACK	PACKAGE TYPE
MX.01.AL.200025	20	100	TIED
MX.01.AL.250025	25	80	TIED
MX.01.AL.320025	32	60	TIED
MX.01.AL.400025	40	40	TIED
MX.01.AL.500025	50	20	TIED
MX.01.AL.630025	63	16	TIED

Other Color Options: 



## **PP-R Fittings**

MaxiPipe PP-R

Advantages of Fittings:

- **East Assembly**
- **Superior Durability**
- **Zengin Ürün Çeşitliliği**
- **Variety Options**
- **Excellent Sealing**

# PPR FITTINGS

MaxiPipe offers high-quality fittings to ensure reliable and efficient connections in your PP-R pipe systems. MaxiPipe PP-R fittings complement building plumbing systems, contributing to their long lifespan and trouble-free operation.

MaxiPipe PP-R fittings are manufactured in accordance with the TS EN 15874-3 standard, ensuring quality assurance.

## Features and Advantages of MaxiPipe PP-R Fittings

Joining Methods:

- Socket Fusion Welding
- Mechanical Threaded Connection

**Superior Durability:** MaxiPipe PP-R fittings, made from high-quality polypropylene, maintain their durability for years and are resistant to wear.

**Easy Installation:** MaxiPipe fittings minimize the risk of water or gas leakage with their superior sealing performance

**Excellent Sealing:** MaxiPipe ek parçaları, üstün sızdırmazlık performansı ile su veya gaz kaçağı riskini en aza indirir.

**Variety of Options:** With different sizes and types available, they provide suitable solutions for all kinds of projects..

MaxiPipe PP-R fittings guarantee reliability, durability, and performance in your water and gas pipe systems. By offering the quality and efficiency your systems need, they take your projects to the next level.

## PP-R COUPLER



PRODUCT CODE	DN(Φ)	UNITS PER PACK	PACKAGE TYPE
MX.02.MAN.2000	20	400	PCS
MX.02.MAN.2500	25	250	PCS
MX.02.MAN.3200	32	120	PCS
MX.02.MAN.4000	40	60	PCS
MX.02.MAN.5000	50	40	PCS
MX.02.MAN.6300	63	20	PCS
MX.02.MAN.7500	75	10	PCS
MX.02.MAN.9000	90	4	PCS
MX.02.MAN.11000	110	1	PCS



## PP-R REDUCER COUPLER

PRODUCT CODE	DN(Φ)	UNITS PER PACK	PACKAGE TYPE
MX.02.RED.MAN.2520	25x20	100	PCS
MX.02.RED.MAN.3225	32x25	40	PCS

Other Color Options:     

## PP-R 90° ELBOW

MX.02.DR90.2000	20	250	PCS
MX.02.DR90.2500	25	150	PCS
MX.02.DR90.3200	32	80	PCS
MX.02.DR90.4000	40	30	PCS
MX.02.DR90.5000	50	20	PCS
MX.02.DR90.6300	63	10	PCS
MX.02.DR90.7500	75	8	PCS
MX.02.DR90.9000	90	2	PCS
MX.02.DR90.11000	110	1	PCS



## PP-R 45° ELBOW

PRODUCT CODE	DN(Φ)	UNITS PER PACK	PACKAGE TYPE
MX.02.DR45.2000	20	200	PCS
MX.02.DR45.2500	25	150	PCS
MX.02.DR45.3200	32	75	PCS
MX.02.DR45.4000	40	25	PCS
MX.02.DR45.5000	50	20	PCS
MX.02.DR45.6300	63	10	PCS



## PP-R TAIL ELBOW 90°

PRODUCT CODE	DN(Φ)	UNITS PER PACK	PACKAGE TYPE
MX.02.DR90.KY.2000	20	200	PCS
MX.02.DR90.KY.2500	25	150	PCS



## PP-R TAIL ELBOW 45°

PRODUCT CODE	DN(Φ)	UNITS PER PACK	PACKAGE TYPE
MX.02.DR45.KY.2000	20	250	PCS
MX.02.DR45.KY.2500	25	150	PCS



Other Color Options: 



## PP-R C BRIDGE

PRODUCT CODE	DN(Φ)	UNITS PER PACK	PACKAGE TYPE
MX.02.C.2000	20	275	PCS
MX.02.C.2500	25	150	PCS
MX.02.C.3200	32	70	PCS



## PP-R STRAIGHT BRIDGE

PRODUCT CODE	DN(Φ)	UNITS PER PACK	PACKAGE TYPE
MX.02.DK.2000	20	100	PCS
MX.02.DK.2500	25	60	PCS
MX.02.DK.3200	32	40	PCS



## PP-R BRIDGE WITH COUPLER

PRODUCT CODE	DN(Φ)	UNITS PER PACK	PACKAGE TYPE
MX.02.MK.2000	20	150	PCS
MX.02.MK.2500	25	60	PCS
MX.02.MK.3200	32	50	PCS



## PP-R TE

PRODUCT CODE	DN(Φ)	UNITS PER PACK	PACKAGE TYPE
MX.02.TE.2000	20	200	PCS
MX.02.TE.2500	25	120	PCS
MX.02.TE.3200	32	80	PCS
MX.02.TE.4000	40	30	PCS
MX.02.TE.5000	50	20	PCS
MX.02.TE.6300	63	14	PCS
MX.02.TE.7500	75	4	PCS
MX.02.TE.9000	90	2	PCS
MX.02.TE.11000	110	1	PCS

Other Color Options:     

## PP-R INEQUAL TE

PRODUCT CODE	DN(Φ)	UNITS PER PACK	PACKAGE TYPE
MX.02.ITE.252025	25x20x25	80	PCS
MX.02.ITE.322032	32x20x32	30	PCS
MX.02.ITE.322532	32x25x32	40	PCS
MX.02.ITE.402040	40x20x40	15	PCS
MX.02.ITE.402540	40x25x40	15	PCS
MX.02.ITE.403240	40x32x40	20	PCS
MX.02.ITE.502050	50x20x50	10	PCS
MX.02.ITE.502550	50x25x50	10	PCS
MX.02.ITE.503250	50x32x50	10	PCS
MX.02.ITE.504050	50x40x50	10	PCS
MX.02.ITE.632063	63x20x63	5	PCS
MX.02.ITE.632563	63x25x63	5	PCS
MX.02.ITE.633263	63x32x63	5	PCS
MX.02.ITE.634063	63x40x63	3	PCS
MX.02.ITE.635063	63x50x63	3	PCS



## PP-R REDUCER

PRODUCT CODE	DN(Φ)	UNITS PER PACK	PACKAGE TYPE
MX.02.RED.2520	25 x 20	200	PCS
MX.02.RED.3220	32 x 20	125	PCS
MX.02.RED.3225	32 x 25	100	PCS
MX.02.RED.4020	40 x 20	50	PCS
MX.02.RED.4032	40 x 32	50	PCS
MX.02.RED.5020	50 x 20	25	PCS
MX.02.RED.5025	50 x 25	25	PCS
MX.02.RED.5032	50 x 32	25	PCS
MX.02.RED.5040	50 x 40	25	PCS
MX.02.RED.6332	63 x 32	20	PCS
MX.02.RED.6340	63 x 40	20	PCS
MX.02.RED.6350	63 x 50	10	PCS



## PP-R REDUCER ELBOW

PRODUCT CODE	DN(Φ)	UNITS PER PACK	PACKAGE TYPE
MX.02.DR90.RED.2520	25 x 20	200	PCS
MX.02.DR90.RED.3220	32 x 20	100	PCS



Other Color Options: 



## PP-R END CAP

PRODUCT CODE	DN(Φ)	UNITS PER PACK	PACKAGE TYPE
MX.02.KAB.2000	20	300	PCS
MX.02.KAB.2500	25	200	PCS
MX.02.KAB.3200	32	100	PCS
MX.02.KAB.4000	40	50	PCS
MX.02.KAB.5000	50	20	PCS
MX.02.KAB.6300	63	10	PCS
MX.02.KAB.7500	75	6	PCS
MX.02.KAB.9000	90	5	PCS
MX.02.KAB.11000	110	2	PCS



## PP-R BLIND CAP

PRODUCT CODE	DN(Φ)	UNITS PER PACK	PACKAGE TYPE
MX.02.KT.2012	20 x 1/2"	200	PCS
MX.02.KT.2534	25 x 3/4"	150	PCS



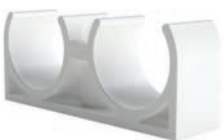
## PP-R YE FILTER

PRODUCT CODE	DN(Φ)	UNITS PER PACK	PACKAGE TYPE
MX.02.YF.2012	20 x 1/2"	100	PCS
MX.02.YF.2534	25 x 3/4"	70	PCS



## PP-R SINGLE CLAMP

PRODUCT CODE	DN(Φ)	UNITS PER PACK	PACKAGE TYPE
MX.02.TK.2000	20	400	PCS
MX.02.TK.2500	25	300	PCS
MX.02.TK.3200	32	200	PCS
MX.02.TK.4000	40	100	PCS



## PP-R DOUBLE CLAMP

PRODUCT CODE	DN(Φ)	UNITS PER PACK	PACKAGE TYPE
MX.02.CK.2000	20	200	PCS
MX.02.CK.2500	25	100	PCS
MX.02.CK.3200	32	100	PCS

Other Color Options:     

## PP-R BALL VALVE

PRODUCT CODE	DN(Φ)	UNITS PER PACK	PACKAGE TYPE
MX.02.KV.2000	20	20	PCS
MX.02.KV.2500	25	20	PCS
MX.02.KV.3200	32	10	PCS
MX.02.KV.4000	40	10	PCS
MX.02.KV.5000	50	5	PCS
MX.02.KV.6300	63	3	PCS



## PP-R FLUSH VALVE

PRODUCT CODE	DN(Φ)	UNITS PER PACK	PACKAGE TYPE
MX.02.SV.2000	20x1/2"	50	PCS
MX.02.SV.2500	25x3/4"	30	PCS
MX.02.SV.3200	32x1"	20	PCS



## PP-R BALL VALVE MALE

PRODUCT CODE	DN(Φ)	UNITS PER PACK	PACKAGE TYPE
MX.02.VE.2000	20 x 1/2"	60	PCS
MX.02.VE.2500	25 x 3/4"	50	PCS
MX.02.VE.3200	32x 1"	40	PCS



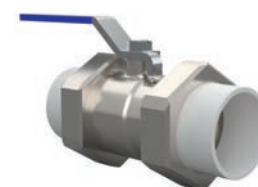
## PP-R BALL VALVE FEMALE

PRODUCT CODE	DN(Φ)	UNITS PER PACK	PACKAGE TYPE
MX.02.VD.2000	20 x 1/2"	60	PCS
MX.02.VD.2500	25 x 3/4"	50	PCS
MX.02.VD.3200	32 x 1"	40	PCS



## PP-R BALL VALVE WITH PPR CONNECTION

PRODUCT CODE	DN(Φ)	UNITS PER PACK	PACKAGE TYPE
MX.02.VPP.2000	20	25	PCS
MX.02.VPP.2500	25	20	PCS



## PP-R CHROME LUXURY VALVE

PRODUCT CODE	DN(Φ)	UNITS PER PACK	PACKAGE TYPE
MX.02.KLV.2000	20	25	PCS
MX.02.KLV.2500	25	20	PCS
MX.02.KLV.3200	32	15	PCS



Other Color Options: 



## PP-R CHROME LUXURY SC VALVE

PRODUCT CODE	DN(Φ)	UNITS PER PACK	PACKAGE TYPE
MX.02.KLGV.2000	20	25	PCS
MX.02.KLGV.2500	25	20	PCS
MX.02.KLGV.3200	32	15	PCS



## PP-R FEMALE 90° ELBOW

PRODUCT CODE	DN(Φ)	UNITS PER PACK	PACKAGE TYPE
MX.02.DR90.ID.2012	20 x 1/2"	140	PCS
MX.02.DR90.ID.2512	25 x 1/2"	100	PCS
MX.02.DR90.ID.2534	25 x 3/4"	100	PCS
MX.02.DR90.ID.3234	32 x 3/4"	65	PCS
MX.02.DR90.ID.3201	32 x 1"	50	PCS



## PP-R MALE 90° ELBOW

PRODUCT CODE	DN(Φ)	UNITS PER PACK	PACKAGE TYPE
MX.02.DR90.DD.2012	20 x 1/2"	140	PCS
MX.02.DR90.DD.2512	25 x 1/2"	100	PCS
MX.02.DR90.DD.2534	25 x 3/4"	100	PCS
MX.02.DR90.DD.3234	32 x 3/4"	60	PCS
MX.02.DR90.DD.3201	32 x 1"	50	PCS



## PP-R ELBOW WITH LOOSE NUT 90°

PRODUCT CODE	DN(Φ)	UNITS PER PACK	PACKAGE TYPE
MX.02.DR90.HRK.2012	20 x 1/2"	200	PCS
MX.02.DR90.HRK.2534	25 x 3/4"	150	PCS



## PP-R FEMALE TE

PRODUCT CODE	DN(Φ)	UNITS PER PACK	PACKAGE TYPE
MX.02.TE.ID.2012	20 x 1/2"	120	PCS
MX.02.TE.ID.2512	25 x 1/2"	90	PCS
MX.02.TE.ID.2534	25 x 3/4"	80	PCS
MX.02.TE.ID.3234	32 x 3/4"	50	PCS
MX.02.TE.ID.3201	32 x 1"	40	PCS

Other Color Options:     

## PP-R MALE TE

PRODUCT CODE	DN(Φ)	UNITS PER PACK	PACKAGE TYPE
MX.02.TE.DD.2012	20 x 1/2"	120	PCS
MX.02.TE.DD.2512	25 x 1/2"	90	PCS
MX.02.TE.DD.2534	25 x 3/4"	80	PCS
MX.02.TE.DD.3234	32 x 3/4"	50	PCS
MX.02.TE.DD.3201	32 x 1"	40	PCS



## PP-R FEMALE TRANSITION

PRODUCT CODE	DN(Φ)	UNITS PER PACK	PACKAGE TYPE
MX.02.NP.ID.2012	20 x 1/2"	180	PCS
MX.02.NP.ID.2034	20 x 3/4"	160	PCS
MX.02.NP.ID.2512	25 x 1/2"	140	PCS
MX.02.NP.ID.2534	25 x 3/4"	140	PCS
MX.02.NP.ID.3234	32 x 3/4"	80	PCS
MX.02.NP.ID.3201	32 x 1"	80	PCS



## PP-R MALE TRANSITION

PRODUCT CODE	DN(Φ)	UNITS PER PACK	PACKAGE TYPE
MX.02.NP.DD.2012	20 x 1/2"	180	PCS
MX.02.NP.DD.2034	20 x 3/4"	160	PCS
MX.02.NP.DD.2512	25 x 1/2"	140	PCS
MX.02.NP.DD.2534	25 x 3/4"	140	PCS
MX.02.NP.DD.3234	32 x 3/4"	80	PCS
MX.02.NP.DD.3201	32 x 1"	80	PCS



## PP-R FEMALE HEXAGONAL SOCKET

PRODUCT CODE	DN(Φ)	UNITS PER PACK	PACKAGE TYPE
MX.02.ANP.ID.400114	40 x 1 1/4"	10	PCS
MX.02.ANP.ID.500112	50 x 1 1/2"	10	PCS
MX.02.ANP.ID.6302	63 x 2"	4	PCS
MX.02.ANP.ID.7525	75 x 2 1/2"	2	PCS
MX.02.ANP.ID.9003	90 x 3"	2	PCS



Other Color Options: 

## PP-R MALE HEXAGONAL SOCKET



PRODUCT CODE	DN(Φ)	UNITS PER PACK	PACKAGE TYPE
MX.02.ANP.DD.400114	40 x 1 1/4"	10	PCS
MX.02.ANP.DD.500112	50 x 1 1/2"	10	PCS
MX.02.ANP.DD.6302	63 x 2"	4	PCS
MX.02.ANP.DD.7525	75 x 2 1/2"	2	PCS
MX.02.ANP.DD.9003	90 x 3"	2	PCS

## PP-R TRANSITION NIPPLE FEMALE



PRODUCT CODE	DN(Φ)	UNITS PER PACK	PACKAGE TYPE
MX.02.OB.ID.2012	20 x 1/2"	100	PCS
MX.02.OB.ID.2034	20 x 3/4"	100	PCS
MX.02.OB.ID.2534	25 x 3/4"	50	PCS
MX.02.OB.ID.3201	32 x 1"	25	PCS
MX.02.OB.ID.400114	40 x 1 1/4"	20	PCS
MX.02.OB.ID.500112	50 x 1 1/2"	10	PCS
MX.02.OB.ID.6302	63 x 2"	5	PCS

## PP-R TRANSITION NIPPLE MALE



PRODUCT CODE	DN(Φ)	UNITS PER PACK	PACKAGE TYPE
MX.02.OB.DD.2012	20 x 1/2"	100	PCS
MX.02.OB.DD.2034	20 x 3/4"	100	PCS
MX.02.OB.DD.2534	25 x 3/4"	50	PCS
MX.02.OB.DD.3201	32 x 1"	25	PCS
MX.02.OB.DD.400114	40 x 1 1/4"	20	PCS
MX.02.OB.DD.500112	50 x 1 1/2"	18	PCS
MX.02.OB.DD.6302	63 x 2"	8	PCS

## PP-R NIPPLE WITH LOOSE NUT



PRODUCT CODE	DN(Φ)	UNITS PER PACK	PACKAGE TYPE
MX.02.NP.HRK.2012	20 x 1/2"	200	PCS
MX.02.NP.HRK.2534	25 x 3/4"	150	PCS

Other Color Options:     

## PP-R FEMALE DOUBLE BATTERY CONNECTION

PRODUCT CODE	DN(Φ)	UNITS PER PACK	PACKAGE TYPE
MX.02.CBB.ID.2012	20 x 1/2"	30	PCS
MX.02.CBB.ID.2512	25 x 1/2"	20	PCS



## PP-R MALE DOUBLE BATTERY CONNECTION

PRODUCT CODE	DN(Φ)	UNITS PER PACK	PACKAGE TYPE
MX.02.CBB.DD.2012	20 x 1/2"	30	PCS



## PP-R WALLPLATE ELBOW MALE

PRODUCT CODE	DN(Φ)	UNITS PER PACK	PACKAGE TYPE
MX.02.TBB.DD.2512	20 x 1/2"	80	PCS



## PP-R WALLPLATE ELBOW FEMALE

PRODUCT CODE	DN(Φ)	UNITS PER PACK	PACKAGE TYPE
MX.02.TBB.ID.2512	25 x 1/2"	50	PCS



## PP-R ADJUSTABLE BATTERY

PRODUCT CODE	DN(Φ)	UNITS PER PACK	PACKAGE TYPE
MX.02.TB.2012	20 x 1/2"	10	PCS
MX.02.TB.2512	25 x 1/2"	5	PCS



## PP-R BIDET BATTERY

PRODUCT CODE	DN(Φ)	UNITS PER PACK	PACKAGE TYPE
MX.02.TB.2012	20 x 1/2"	25	PCS
MX.02.TB.2512	25 x 1/2"	20	PCS



Other Color Options: 



## MINI COMBI SET

PRODUCT CODE	DN( $\Phi$ )	UNITS PER PACK	PACKAGE TYPE
MX.02.KSM.DR8	8 Lİ DİRSEKLİ NİPELİ	24	BOX
MX.02.KSM.DZ8	8 Lİ DÜZ NİPELİ	24	BOX
MX.02.KSM.DR10	10 LU DİRSEKLİ NİPELİ	24	BOX
MX.02.KSM.DZ10	10 LU DÜZ NİPELİ	24	BOX



## COMBI SET

PRODUCT CODE	DN( $\Phi$ )	UNITS PER PACK	PACKAGE TYPE
MX.02.KS.DR8	8 Lİ DİRSEKLİ NİPELİ	24	BOX
MX.02.KS.DZ8	8 Lİ DÜZ NİPELİ	24	BOX
MX.02.KS.DR10	10 LU DİRSEKLİ NİPELİ	24	BOX
MX.02.KS.DZ10	10 LU DÜZ NİPELİ	24	BOX



**kuzeyboru**

kuzeyboru

kuzeyboru

## **PVC-U Pipe and Fittings**

Advantages of  
PVC-U Pipes

- **Durability**
- **High Resistance**
- **Easy Assembly**



# PVC-U PRODUCTS

PVC-U wastewater pipes and fittings ensure the ideal and safe drainage of building foundation and internal wastewater without leakage.

They are flame-retardant and prevent the spread of fire between floors in the event of a fire.

Thanks to their smooth inner and outer surfaces, they do not allow the formation of sediment or accumulation.

They provide ease during installation.

They have high resistance to sunlight and weather conditions.

They are resistant to acids, bases, salt solutions, and oxidation. Due to their mold resistance property, they prevent bacterial growth and do not produce odors.

PVC-U wastewater pipes maintain their physical structure at continuous operating temperatures up to 60°C.



## PVC-U PIPES

PRODUCT CODE	DN(Φ)	UNITS PER PACK	PACKAGE TYPE
MX.04.050150	50 x 150	100	PCS
MX.04.050250	50 x 250	60	PCS
MX.04.050500	50 x 500	50	PCS
MX.04.0501000	50 x 1000	10	PCS
MX.04.0502000	50 x 2000	10	PCS
MX.04.0503000	50 x 3000	10	PCS
MX.04.0506000	50 x 6000	1	PCS

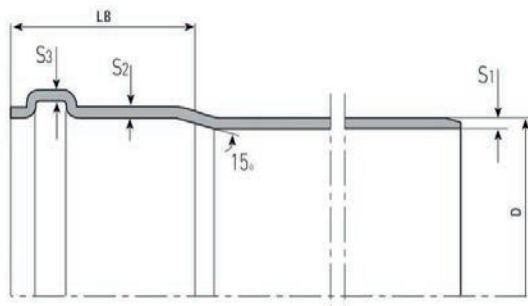
PRODUCT CODE	DN(Φ)	UNITS PER PACK	PACKAGE TYPE
MX.04.075150	75 x 150	30	PCS
MX.04.075250	75 x 250	40	PCS
MX.04.075500	75 x 500	20	PCS
MX.04.0751000	75 x 1000	6	PCS
MX.04.0752000	75 x 2000	6	PCS
MX.04.0753000	75 x 3000	6	PCS
MX.04.0756000	75 x 6000	1	PCS

PRODUCT CODE	DN(Φ)	UNITS PER PACK	PACKAGE TYPE
MX.04.110150	110 x 150	25	PCS
MX.04.110250	110 x 250	25	PCS
MX.04.110500	110 x 500	15	PCS
MX.04.1101000	110 x 1000	4	PCS
MX.04.1102000	110 x 2000	4	PCS
MX.04.1103000	110 x 3000	4	PCS
MX.04.1106000	110 x 6000	1	PCS

PRODUCT CODE	DN(Φ)	UNITS PER PACK	PACKAGE TYPE
MX.04.125150	125 x 150	10	PCS
MX.04.125250	125 x 250	10	PCS
MX.04.125500	125 x 500	10	PCS
MX.04.1251000	125 x 1000	5	PCS
MX.04.1252000	125 x 2000	5	PCS
MX.04.1253000	125 x 3000	3	PCS
MX.04.1256000	125 x 6000	1	PCS

PRODUCT CODE	DN(Φ)	UNITS PER PACK	PACKAGE TYPE
MX.04.160250	160 x 250	10	PCS
MX.04.160500	160 x 500	6	PCS
MX.04.1601000	160 x 1000	3	PCS
MX.04.1602000	160 x 2000	1	PCS
MX.04.1603000	160 x 3000	1	PCS
MX.04.1606000	160 x 6000	1	PCS

PRODUCT CODE	DN(Φ)	UNITS PER PACK	PACKAGE TYPE
MX.04.200250	200 x 250	1	PCS
MX.04.200500	200 x 500	1	PCS
MX.04.2001000	200 x 1000	1	PCS
MX.04.2002000	200 x 2000	1	PCS
MX.04.2003000	200 x 3000	1	PCS
MX.04.2006000	200 x 6000	1	PCS



#### Additional features of PVC Pipes

Outer Diameter (mm)	S1 (mm)	S2 (mm)	S3 (mm)
50	3,1	3	2,45
75	2,9	2,8	2,25
110	2,95	2,9	2,3
125	3,2	3,2	2,4
150	3,2	3,2	2,5

NOT: Since there is no single type of raw material used in the products mentioned above, they have a tolerance of +/-5%.

# PVC-U FITTINGS

**PVC-U Fittings** provide safe solutions for direction changes, connections, and transitions in pipe systems. Their durable construction ensures long-lasting use and high leak-tight performance. They reduce labor time by offering easy installation and removal in plumbing systems. Produced in different sizes and types, the fittings adapt to any application area. They can be used seamlessly in both industrial and residential systems. With their resistance to corrosion and chemicals, they deliver maximum performance even under harsh conditions.



## PVC-U ELBOW 45°

PRODUCT CODE	DN(Φ)	UNITS PER PACK	PACKAGE TYPE
MX.05.DR45.50	50	250	PCS
MX.05.DR45.75	75	120	PCS
MX.05.DR45.110	110	40	PCS
MX.05.DR45.125	125	20	PCS
MX.05.DR45.160	160	10	PCS
MX.05.DR45.200	200	5	PCS



## PVC-U ELBOW 87,5°

PRODUCT CODE	DN(Φ)	UNITS PER PACK	PACKAGE TYPE
MX.05.DR90.50	50	150	PCS
MX.05.DR90.75	75	75	PCS
MX.05.DR90.110	110	25	PCS
MX.05.DR90.125	125	15	PCS
MX.05.DR90.160	160	10	PCS
MX.05.DR90.200	200	4	PCS



## PVC-U SINGLE BRANCH 45°

PRODUCT CODE	DN(Φ)	UNITS PER PACK	PACKAGE TYPE
MX.05.TC45.5050	50 x 50	120	PCS
MX.05.TC45.7550	75 x 50	60	PCS
MX.05.TC45.7575	75 x 75	45	PCS
MX.05.TC45.11050	110 x 50	30	PCS
MX.05.TC45.11075	110 x 75	25	PCS
MX.05.TC45.110110	110 x 110	15	PCS
MX.05.TC45.125125	125 x 125	6	PCS
MX.05.TC45.160110	160 x 110	5	PCS
MX.05.TC45.160160	160 x 160	4	PCS
MX.05.TC45.200200	200 x 200	4	PCS

## PVC-U SINGLE BRANCH 90°

PRODUCT CODE	DN(Φ)	UNITS PER PACK	PACKAGE TYPE
MX.05.TC90.5050	50 x 50	120	PCS
MX.05.TC90.7550	75 x 50	60	PCS
MX.05.TC90.7575	75 x 75	20	PCS
MX.05.TC90.11050	110 x 50	30	PCS
MX.05.TC90.11075	110 x 75	25	PCS
MX.05.TC90.110110	110 x 110	15	PCS
MX.05.TC90.125110	125 x 110	10	PCS



## PVC-U COUPLER

PRODUCT CODE	DN(Φ)	UNITS PER PACK	PACKAGE TYPE
MX.05.KM.50	50	200	PCS
MX.05.KM.75	75	100	PCS
MX.05.KM.110	110	50	PCS



## PVC-U REDUCER

PRODUCT CODE	DN(Φ)	UNITS PER PACK	PACKAGE TYPE
MX.05.RED.7550	75 x 50	120	PCS
MX.05.RED.11050	110 x 50	60	PCS
MX.05.RED.11075	110 x 75	20	PCS
MX.05.RED.125110	125 x 110	30	PCS
MX.05.RED.160110	160 x 110	25	PCS
MX.05.RED.200110	200 x 110	15	PCS
MX.05.RED.200160	200 x 160	10	PCS



## PVC-U END CAP

PRODUCT CODE	DN(Φ)	UNITS PER PACK	PACKAGE TYPE
MX.05.KT.50	50	200	PCS
MX.05.KT.75	75	100	PCS
MX.05.KT.110	110	50	PCS



## PVC-U CLAMP



PRODUCT CODE	DN(Φ)	UNITS PER PACK	PACKAGE TYPE
MX.05.KL.50	50	600	PCS
MX.05.KL.75	75	250	PCS
MX.05.KL.110	110	100	PCS
MX.05.KL.125	125	100	PCS
MX.05.KL.160	160	50	PCS



## PVC-U S

PRODUCT CODE	DN(Φ)	UNITS PER PACK	PACKAGE TYPE
MX.05.ES.110	110	12	PCS

## PVC-U GASKET



PRODUCT CODE	DN(Φ)	UNITS PER PACK	PACKAGE TYPE
MX.05.PCN.50	50	100	PCS
MX.05.PCN.75	75	100	PCS
MX.05.PCN.110	110	100	PCS
MX.05.PCN.125	125	100	PCS
MX.05.PCN.160	160	100	PCS
MX.05.PCN.200	200	100	PCS



## PE-RT and PE-XB Pipes

MaxiPipe PE-RT and PE-XB  
Advantages of Pipes:

- **Easy Installation**
- **High Durability**
- **Environmentally Friendly**
- **Low Attachment Requirement**

# PE-RT PIPES

PE-RT pipes are made from Polyethylene of Raised Temperature (a type of polyethylene resistant to high temperatures) and are used primarily for in-building installations, including underfloor heating, and for transporting hot or cold potable water. They are produced according to the TS EN ISO 22391-2 standard. Depending on the application and pipe characteristics, they are available in different options, including EVOH (Oxygen Barrier), with or without casing.

## Advantages of Maxpipe PE-RT Pipes:

**Easy Installation:** Their lightweight and flexible structure allows for easy installation.

**High Durability:** They are resistant to high pressure and temperature, with excellent chemical resistance.

**Environmentally Friendly:** They are 100% recyclable at the end of their useful life.

**Layered Structure:** The oxygen barrier prevents oxygen from entering the pipe, increasing resistance to oxidation and corrosion (sludge formation).

**Low Fitting Requirements:** With high winding lengths and coil structure, they facilitate easier application and transportation while minimizing the need for additional fittings.



## PE-RT PIPE

PRODUCT CODE	DN(Φ)	UNITS PER PACK	PACKAGE TYPE
MX.03.PRB.160002	16 x 2	240	METRES



## PE-RT PIPE WITH OXYGEN BARRIER

PRODUCT CODE	DN(Φ)	UNITS PER PACK	PACKAGE TYPE
MX.03.PRO.160002	16 x 2	240	METRES



## PE-RT COVERED PIPE

PRODUCT CODE	COLOR	DN(Φ)	UNITS PER PACK	PACKAGE TYPE
MX.03.PRSM.160002	BLUE	16 x 2	100	METRES
MX.03.PRSK.160002	RED	16 x 2	100	METRES



## PE-RT COVERED PIPE WITH OXYGEN BARRIER

PRODUCT CODE	COLOR	DN(Φ)	UNITS PER PACK	PACKAGE TYPE
MX.03.POSM.160002	BLUE	16 x 2	100	METRES
MX.03.POSK.160002	RED	16 x 2	100	METRES

# PE-XB PIPE

PE-XB pipes are made from high-temperature-resistant polyethylene, with crosslinks (Corsslink) formed between molecules during production using the Silane method. These crosslinks enhance the product's resistance to temperature and pressure, as well as extend its lifespan. Depending on the application and pipe characteristics, they are available in different options, including EVOH (Oxygen Barrier), with or without casing. These pipes are used primarily for in-building installations, such as underfloor heating, and for transporting hot or cold potable water. They comply with the TS 10762-2 standard.

## Advantages of Maxpipe PE-XB Pipes:

**Easy Installation:** Their lightweight and flexible structure allows for easy installation.

**High Durability:** They are resistant to high pressure and temperature, with excellent chemical resistance.

**Environmentally Friendly:** They are 100% recyclable at the end of their useful life.

**Layered Structure:** The oxygen barrier prevents oxygen from entering the pipe, enhancing resistance to oxidation and corrosion (sludge formation).

**Low Fitting Requirements:** With high winding lengths and coil structure, they facilitate easier application and transportation while minimizing the need for additional fittings.

## PE-XB PIPE

PRODUCT CODE	DN(Φ)	UNITS PER PACK	PACKAGE TYPE
MX.03.PEB.160002	16 x 2	240	METRES



## PE-XB PIPE WITH OXYGEN BARRIER

PRODUCT CODE	DN(Φ)	UNITS PER PACK	PACKAGE TYPE
MX.03.PEO.160002	16 x 2	240	METRES



## PE-XB PIPE WITH COVER

PRODUCT CODE	COLOR	DN(Φ)	UNITS PER PACK	PACKAGE TYPE
MX.03.PESM.160002	BLUE	16 x 2	100	METRES
MX.03.PESK.160002	RED	16 x 2	100	METRES



## PE-XB COVERED PIPE WITH OXYGEN BARRIER



PRODUCT CODE	COLOR	DN(Φ)	UNITS PER PACK	PACKAGE TYPE
MX.03.PEOSM.160002	BLUE	16 x 2	100	METRES
MX.03.PEOSK.160002	RED	16 x 2	100	METRES



## PEX END CAP

PRODUCT CODE	DN(Φ)	UNITS PER PACK	PACKAGE TYPE
MX.04.KT.1600	16mm	100	PCS



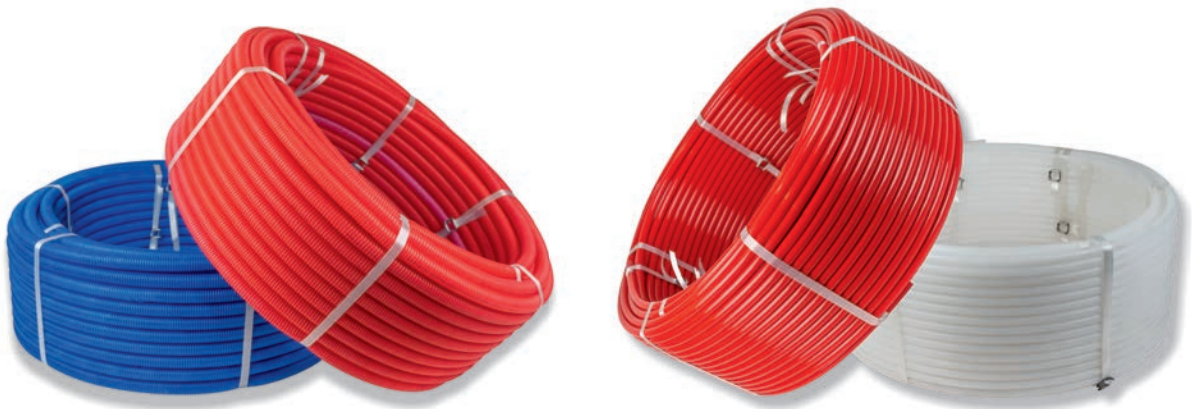
## ANGLE PIPE GUIDE

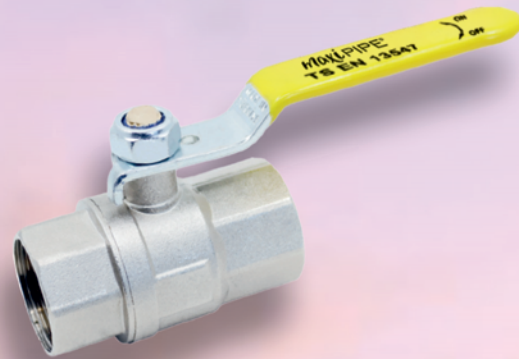
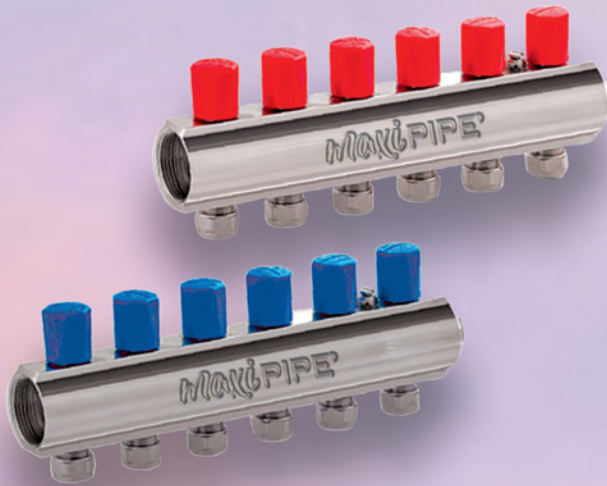
PRODUCT CODE	DN(Φ)	UNITS PER PACK	PACKAGE TYPE
MX.04.KD.16	16	200	PCS



## PIPE FIXTURE

PRODUCT CODE	DN(Φ)	UNITS PER PACK	PACKAGE TYPE
MX.04.KK.25	25	500	PCS

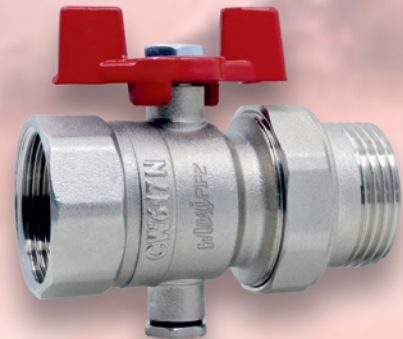




## **MaxiPipe Metal Group**

### MaxiPipe Metal Group Advantages of Valves

- Quick Assembly
- Long Life
- International Quality
- High Pressure Efficiency
- Rich Product Variety
- Maximum Heat Efficiency



# MaxiPipe Metal Group

MaxiPipe Metal Group sanitary plumbing systems are developed to ensure the safe, durable, and efficient flow of water and gas, consisting of multi-layered, high-performance products. These products offer superior solutions for both residential and industrial applications, thanks to the combination of mechanical strength provided by the copper brass metal layer.

**PP-R Metal Group Products:** Are preferred especially in hot and cold water lines, natural gas transmission systems, and pressurized lines. Thermal expansion is controlled thanks to copper brass or similar metal alloys. Stability in the system is increased, ensuring long-term use.

**Applications:** Plumbing systems (residential, commercial, and industrial buildings). Clean water and hot water distribution lines, gas flow systems (natural gas, compressed air, etc.), central heating and cooling applications.

**Features:** High temperature and pressure resistance. Low expansion coefficient (thanks to the metal interlayer). Superior resistance to chemicals and corrosion. Long service life, low maintenance requirements. Easy installation and welding compatibility. The PP-R Metal Group stands out as an ideal choice for safety, efficiency, and sustainability in modern infrastructure systems.



## BALL VALVE PN25 (TSE) TS EN 13547

New Product

PRODUCT CODE	DN(Φ)	UNITS PER PACK	PACKAGE TYPE
03.01.28.250500040	1/2"	100	PCS
03.01.28.250500069	3/4"	80	PCS
03.01.28.250500017	1"	40	PCS
03.01.28.250500011	1 1/4"	32	PCS



## BALL VALVE PN25 (TSE) TS EN 13547

New Product

PRODUCT CODE	DN(Φ)	UNITS PER PACK	PACKAGE TYPE
03.01.28.250500005	1 1/2"	20	PCS
03.01.28.250500057	2"	15	PCS

## BALL VALVE PN10 (TSE) TS EN 13547

New  
Produkt

PRODUCT CODE	DN(Φ)	UNITS PER PACK	PACKAGE TYPE
03.01.28.100500040	1/2"	100	PCS
03.01.28.100500069	3/4"	80	PCS
03.01.28.100500017	1"	40	PCS
03.01.28.100500011	1 1/4"	32	PCS



## BALL VALVE PN10 (TSE) TS EN 13547

New  
Produkt

PRODUCT CODE	DN(Φ)	UNITS PER PACK	PACKAGE TYPE
03.01.28.100500005	1 1/2"	20	PCS
03.01.28.100500057	2"	15	PCS



## NATURAL GAS VALVE MOP 5 TS EN 331

PRODUCT CODE	DN(Φ)	UNITS PER PACK	PACKAGE TYPE
03.01.12.250500028	1/2"	100	PCS
03.01.12.250500066	3/4"	80	PCS
03.01.12.250500014	1"	40	PCS



## NATURAL GAS VALVE MOP 5 TS EN 331

New  
Produkt

PRODUCT CODE	DN(Φ)	UNITS PER PACK	PACKAGE TYPE
03.01.12.250500007	1 1/4"	25	PCS
03.01.12.250500001	1 1/2"	20	PCS
03.01.12.250500055	2"	15	PCS





## NATURAL GAS VALVE 0.5 LOCKED TYPE TS EN 331

PRODUCT CODE	DN(Φ)	UNITS PER PACK	PACKAGE TYPE
03.01.12.K250500028	1/2"	100	PCS
03.01.12.K250500066	3/4"	80	PCS
03.01.12.K250500014	1"	40	PCS



## BALL VALVE

PRODUCT CODE	DN(Φ)	UNITS PER PACK	PACKAGE TYPE
03.01.25.250500037	1/2"	80	PCS
03.01.25.250500066	3/4"	80	PCS
03.01.25.290900048	1"	80	PCS



## MINI BALL VALVE

New  
Product

PRODUCT CODE	DN(Φ)	UNITS PER PACK	PACKAGE TYPE
03.01.25.90001012	1/2"	80	PCS
03.01.25.90001034	3/4"	80	PCS



## BALL VALVE ( MALE- FEMALE)

New  
Product

PRODUCT CODE	DN(Φ)	UNITS PER PACK	PACKAGE TYPE
03.01.25.290900101	1/2"	100	PCS
03.01.25.290900215	3/4"	80	PCS
03.01.25.290900056	1"	50	PCS
03.01.25.290900040	1 1/4"	20	PCS

## CORNER RADIATOR VALVE LIGHT TYPE New Productt

PRODUCT CODE	DN(Φ)	UNITS PER PACK	PACKAGE TYPE
03.01.13.250500034	1/2"	80	PCS



## CORNER RADIATOR VALVE LIGHT MEDIUM

PRODUCT CODE	DN(Φ)	UNITS PER PACK	PACKAGE TYPE
03.01.13.250500035	1/2"	80	PCS



## CORNER RADIATOR VALVE LIGHT HEAVY New Productt

PRODUCT CODE	DN(Φ)	UNITS PER PACK	PACKAGE TYPE
03.01.13.250500036	1/2"	80	PCS



## CORNER RADIATOR VALVE PEX EKO New Productt

PRODUCT CODE	DN(Φ)	UNITS PER PACK	PACKAGE TYPE
03.01.13.250500031	1/2"	80	PCS



## CORNER RADIATOR VALVE LIGHT TYPE WITH NUTS

PRODUCT CODE	DN(Φ)	UNITS PER PACK	PACKAGE TYPE
03.01.13.250500032	1/2"	80	PCS





## CORNER RADIATOR VALVE PEX HEAVY

PRODUCT CODE	DN(Φ)	UNITS PER PACK	PACKAGE TYPE
03.01.13.250500033	1/2"	80	PCS



## RETURN RADIATOR VALVE EKO

PRODUCT CODE	DN(Φ)	UNITS PER PACK	PACKAGE TYPE
03.01.13.250500037	1/2"	80	PCS



## RETURN RADIATOR VALVE MEDIUM

PRODUCT CODE	DN(Φ)	UNITS PER PACK	PACKAGE TYPE
03.01.13.250500038	1/2"	80	PCS



## STRAIGHT RADIATOR VALVE MEDIUM

New Product

PRODUCT CODE	DN(Φ)	UNITS PER PACK	PACKAGE TYPE
03.01.13.40001010	1/2"	80	PCS



## STRAIGHT RADIATOR VALVE

New Product

PRODUCT CODE	DN(Φ)	UNITS PER PACK	PACKAGE TYPE
03.01.13.40001012	1/2"	80	PCS

## STRAIGHT RADIATOR VALVE MEDIUM PEX

New Product

PRODUCT CODE	DN(Φ)	UNITS PER PACK	PACKAGE TYPE
03.01.13.40001602	1/2"	80	PCS



## STRAIGHT RADIATOR VALVE PEX

PRODUCT CODE	DN(Φ)	UNITS PER PACK	PACKAGE TYPE
03.01.13.40001612	1/2"	80	PCS



## WASHING MACHINE FAUCET WITH FILTER

New Product

PRODUCT CODE	DN(Φ)	UNITS PER PACK	PACKAGE TYPE
09.02.01.70001025	1/2"	100	PCS



## Mini Washing Machine Faucet

PRODUCT CODE	DN(Φ)	UNITS PER PACK	PACKAGE TYPE
09.21.0063	1/2"	120	PCS



## FEMALE CONNECTOR

PRODUCT CODE	DN(Φ)	UNITS PER PACK	PACKAGE TYPE
03.02.16.01.290900141	16 x 2"	300	PCS





## MALE CONNECTOR

Ask For Price

PRODUCT CODE	DN(Φ)	UNITS PER PACK	PACKAGE TYPE
03.02.16.01.290900133	16 x 2"	300	PCS



## PIPE PIECE

PRODUCT CODE	DN(Φ)	UNITS PER PACK	PACKAGE TYPE
03.02.16.01.290900132	16 x 2"	300	PCS



## UNION BALL VALVE

New Product

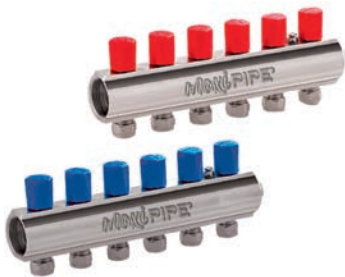
PRODUCT CODE	DN(Φ)	UNITS PER PACK	PACKAGE TYPE
03.01.14.30001201	1"	60	PCS



## BALL VALVE WITH THERMOCOUPLE

New Product

PRODUCT CODE	DN(Φ)	UNITS PER PACK	PACKAGE TYPE
03.01.14.10001201	1"	60	PCS



## 1" VALVE COLLECTOR

PRODUCT CODE	DN(Φ)	UNITS PER PACK	PACKAGE TYPE
03.02.15.01.290900153	2	60	PCS
03.02.15.01.290900173	3	50	PCS
03.02.15.01.290900226	4	40	PCS
03.02.15.01.290900237	5	30	PCS
03.02.15.01.290900242	6	20	PCS
03.02.15.01.290900247	7	10	PCS
03.02.15.01.290900250	8	10	PCS
03.02.15.01.290900252	9	10	PCS
03.02.15.01.290900115	10	10	PCS

## 1" MINI VALVE COLLECTOR

PRODUCT CODE	DN(Φ)	UNITS PER PACK	PACKAGE TYPE
03.02.15.02.290900153	2	50	PCS
03.02.15.02.290900173	3	40	PCS
03.02.15.02.290900226	4	30	PCS
03.02.15.02.290900237	5	20	PCS
03.02.15.02.290900242	6	10	PCS
03.02.15.02.290900247	7	10	PCS
03.02.15.02.290900250	8	10	PCS
03.02.15.02.290900252	9	10	PCS
03.02.15.02.290900115	10	10	PCS



## COLLECTOR CLAMP

PRODUCT CODE	DN(Φ)	UNITS PER PACK	PACKAGE TYPE
03.02.15.02.01	1"	15	PCS



## PIPE CUTTER

Ask For Price

PRODUCT CODE	DN(Φ)	UNITS PER PACK	PACKAGE TYPE
09.17.00040	40	1	PCS
09.17.00063	63	1	PCS



## WELDING MACHINE

Ask For Price

PRODUCT CODE	DN(Φ)	UNITS PER PACK	PACKAGE TYPE
09.04.01.02	1500 Watt	1	PCS





## NON RETURN VALVE

Ask For Price

PRODUCT CODE	DN(Φ)	UNITS PER PACK	PACKAGE TYPE
03.02.05.TP 1030	110	1	ADET
03.02.05.TP 1031	125	1	ADET
03.02.05.TP 1032	160	1	ADET
03.02.05.TP 1040	200	1	ADET



## UNDERFLOOR HEATING FOAM

Ask For Price

PRODUCT CODE	DN(Φ)	UNITS PER PACK	PACKAGE TYPE
05.25.01.CNK.22DNS	22 DNS	11,52	METRE



## PN10 POLYETHYLENE PIPE ( BLUE)

Ask For Price

PRODUCT CODE	DN(Φ)	UNITS PER PACK	PACKAGE TYPE
01.11.002010	20	100	METRE
01.11.002510	25	100	METRE
01.11.003210	32	100	METRE
01.11.004010	40	100	METRE
01.11.005010	50	100	METRE
01.11.006310	63	100	METRE
01.11.007510	75	100	METRE
01.11.009010	90	100	METRE

# DOCUMENTS AND CERTIFICATES









we are  
proud to support  
women and  
women's sports.





the future is in this team



**kuzeyboru**



**kuzey  
boru  
•com  
•tr**